



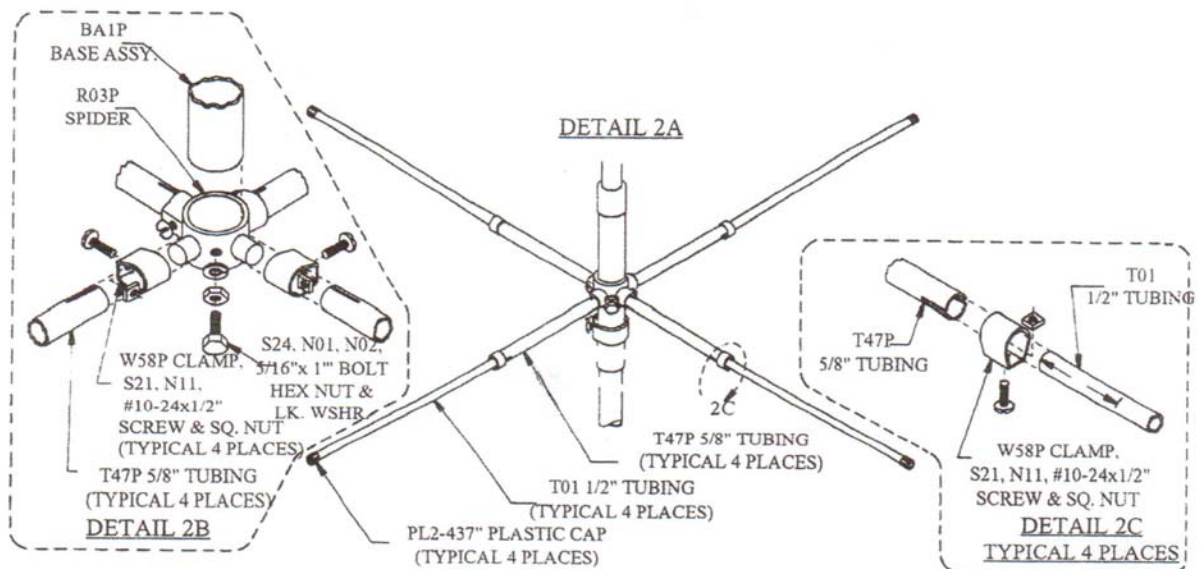
MACO GPRK – RADIAL KIT

PACKING LIST

PART	QTY	SIZE	LENGTH	DESCRIPTION	CHECKLIST
T17P	4	5/8"	18"	Aluminum tubing, slotted both ends	___
T01	4	1/2"	72"	Aluminum tubing	___
R04P	1			Cast Aluminum Spider (4 Hole)	___
HARDWARE BAG					
W58P	8	5/8"		Extruded Aluminum Clamp	___
S21	9	10-24	1/2"	Machine Screws	___
N11	9	10-24		Square Nuts	___
S23	4	3/8"-16	1	Hex Bolts	___
N19	4	3/8"-16		Nut	___
N20	4	3/8"		Lock Washer	___
PL2	4			Plastic Cap – Black	___

To install the radials, first put the aluminum bracket R03P on the base section as shown in Detail 2B. Install the 3/8 x 1 hex bolt, nut, and washer in the bracket. The bracket is positioned so that there is a 2 1/2" to 3" clearance between the top of the spider and the bottom of the fiberglass part of the antenna. Now tighten the bolts and lock nuts. Next, take the four T17P radials and the four W58 clamps with #10-24 x 1/2 screws, hardware S21, N11; and place the clamps with hardware installed over the end of the tubing. Slide the tubing up on a bracket stub and tighten. Repeat with the remaining three radials.

Next take the four T01P radials and using a marking pen, mark 6" from the end on all four radials. Now using clamps W58 and #10-24 x 1/2 screws with hardware S21 and N11; insert the marked end to the mark and tighten clamps (ref. Detail 2C). Install the four PL2 black plastic caps on the ends. Exact length is not critical.



Maco® Antennas – A Division of Charles Electronics, LLC

302 S. East St. Mount Carroll, IL 61053

815-244-3500

www.macoantennas.net



Caution:

**TAKE CARE TO AVOID ANY CONTACT WITH
OVERHEAD POWER LINES WHEN RAISING,
INSTALLING, OR REPAIRING YOUR
ANTENNA, TOWER, OR ROTOR.
DEATH WILL OCCUR!**

Installing and rigging towers, masts and antennas require specialized skills and experience. Information supplied by MACo assumes that all products will be installed by personnel having these skills and have installed similar products before. No one should attempt to install towers or masts without these knowledgeable skills.

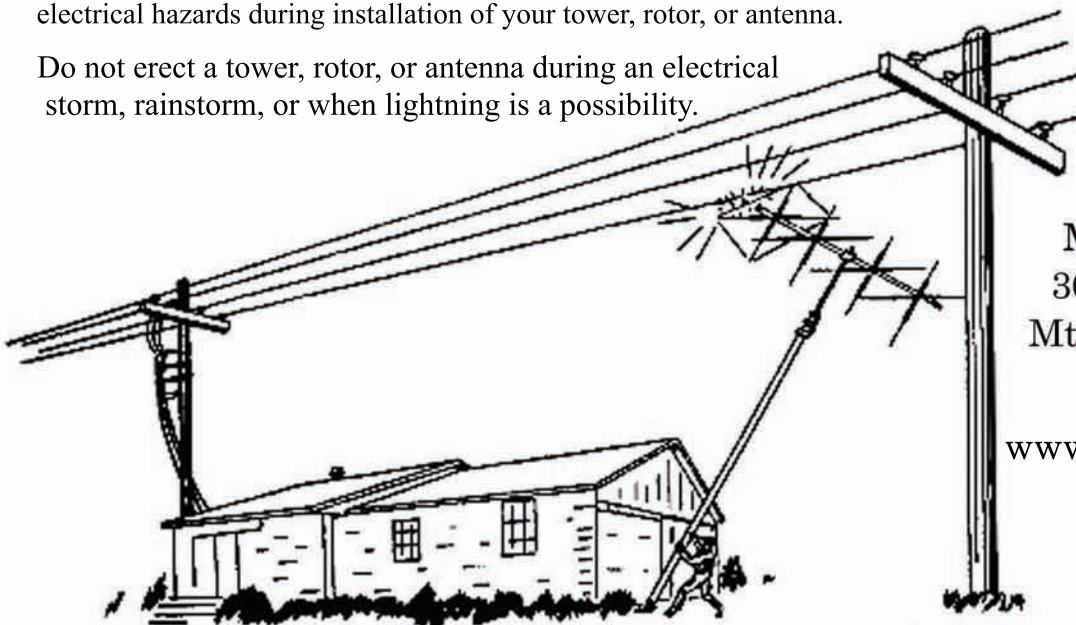
MACo assumes no liability if faulty or dangerous installation practices are used. There are available, trained and experienced personnel to assist in installation, maintenance, or disassembly. Contact your local installer if consultation or assistance is required.

All tower and antenna installations should be thoroughly inspected at least twice a year by qualified, experienced, and trained personnel to insure proper performance and safety standards.

Electrical Warning

An additional warning precaution is given to be careful of surrounding high voltage power wires and other electrical hazards during installation of your tower, rotor, or antenna.

Do not erect a tower, rotor, or antenna during an electrical storm, rainstorm, or when lightning is a possibility.



MACo Antennas
302 S. East Street
Mt. Carroll, IL 61053

www.macoantennas.net
(815) 244-3500

MACo Antennas is a Division of Charles Electronics, LLC